

**POWER
WEDGE**

Users Guide



WEBER-HYDRAULIK GMBH

Heilbronner Straße 30 · D-74363 Güglingen
Tel. 00 49 / 71 35-7 10 · Fax 00 49 / 71 35-7 13 01

Internet: <http://www.weber.de>

e-mail: info@weber.de



INCLUDED IN SET:

- Power Wedge
- Hand Pump
- 3 m of Hose
- 1.4 kg Dead Blow Hammer
- Utility Bar
- Door Strap
- Molded Carrying Case
- Strap Plate
- Cap Screws
- 2-Velcro Hose Straps

POWER WEDGE

The **Power Wedge** is a multi-use, forcible entry tool, originally designed for opening entry doors. At American Rescue Technology we adapted this tool for many uses, including vehicle rescue, confined space rescue, structural collapse, machinery entrapment, machinery maintenance and many others. At American Rescue Technology we believe the time for “one tool, one job” is over. Multi-use tools are the future of the firefighting/law enforcement fields.

TOOL & PERSONAL SAFETY CONSIDERATIONS

- Always wear protective clothing when working with the **Power Wedge**.
- Distribute force as evenly as possible over both spreading heads and all spreading surfaces.
- Insert spreading tips as far in as possible. Use dead blow hammer when appropriate.
- DO NOT use a metal hammer against **Power Wedge** body or heads. Use dead blow hammer provided with kit. Metal hammers could chip or cause damage to the **Power Wedge**.
- To reduce chances of tool failure, protect fittings on tools against unnecessary abuse.
- When using the **Power Wedge** to open doors, use the door strap when possible to keep the tool from falling and causing damage.

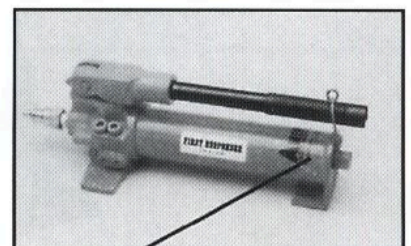
MAINTENANCE REQUIREMENTS

POWER WEDGE: During regular maintenance cycles, check the couplers and adapters for tightness and clean. Keep dirt and other contaminants off of the couplers. Check the pushing heads for damage, clean if necessary. If you experience leaks in the hydraulic cylinder, contact American Rescue Technology.

HOSE: Check tightness of couplers and keep clean.

HAND PUMP: Check tightness of couplers and clean. Clean and oil pumping mechanism when necessary. Check fluid level in hand pump. Stand hand pump on end, coupler side down, and remove phillips head screw from hand pump.

With the power wedge retracted, the fluid level should be about 2.5 cm from the opening. Fill if necessary, fluid is available from your local dealer.

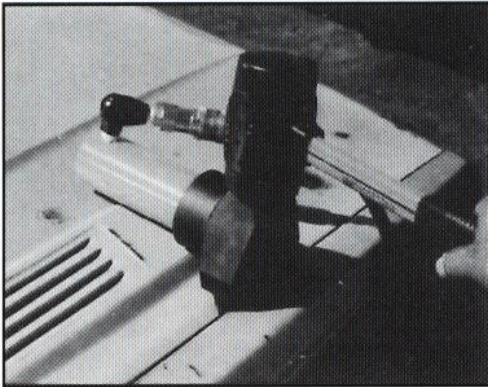
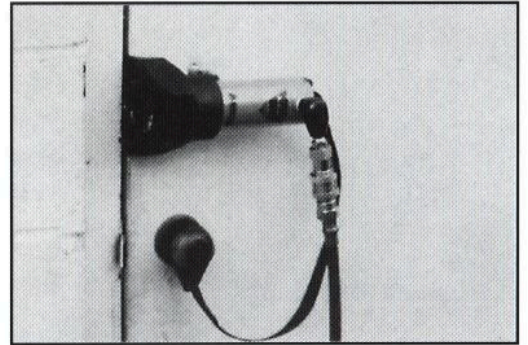


Location of fluid fill



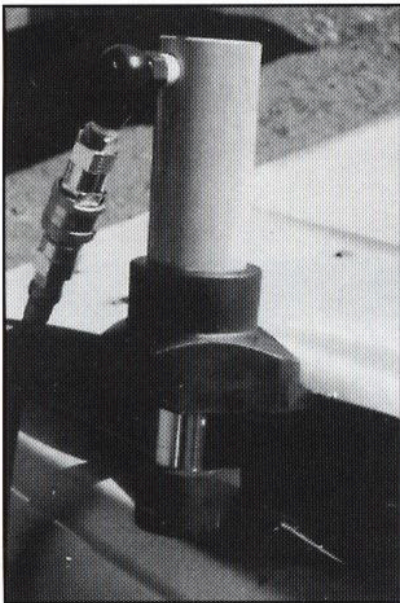
DOOR OPENING

Place the **Power Wedge** between the door and the door jam, near the locking mechanism. The dead blow hammer can be used to force it into place if necessary. Connect the door strap to the door handle (this will prevent the possibility of damage from the tool falling to the ground). Move away from the door and operate the hand pump. The tremendous power and over 102 mm of stroke will break most doors. **TIP:** Remember, doors always open to the side with the exposed barrel section of the hinge.



GENERAL USE

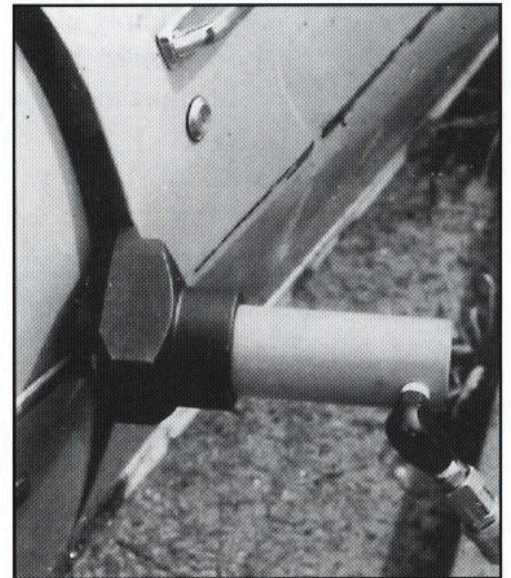
The **Power Wedge** can be put into many tight places by using the dead blow hammer provided with the kit. The **Power Wedge** should only be hit in the back as shown. Keep the hoses and couplers out of the way, hitting the couplers could damage the swivel assembly.



VEHICLE RESCUE

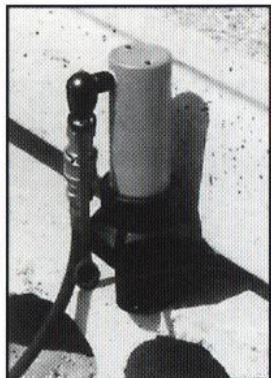
The **Power Wedge** is an effective tool for making purchase points on automobiles. By exposing nader pins and door hinges, heavy hydraulic tools or air hammers can be used to remove the doors.

The **Power Wedge** is also valuable on car fires. It can be placed between the hood and the fender to make an access point for applying foam or water. The 3 m hose keeps the operator from interfering with attack crews.



UNDERWATER USE

The **Power Wedge**, hand pump and hose are a closed system and can be used underwater in rescue and salvage operations. The hose should be connected to the **Power Wedge** and hand pump prior to being submerged. Afterward, the external pump mechanism should be dried and oiled.

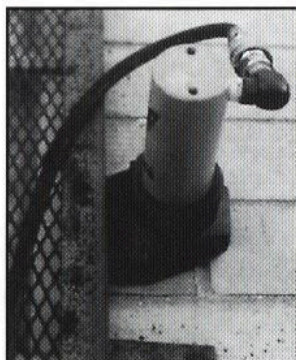
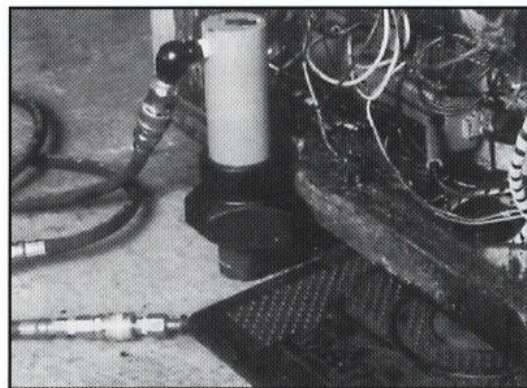


CONFINED SPACE RESCUE

When working in confined spaces, the **Power Wedge** can be used to free victims from wreckage or other obstacles. When lifting with the **Power Wedge**, always crib the object as you lift. This will protect the patient in case of a load shift or other unexpected problem. The **Power Wedge** can also be used in these situations to give clearance for airbags.

MACHINERY MAINTENANCE

The **Power Wedge** can be used to lift heavy machinery for maintenance. Cribbing should be used while lifting the machinery and blocked into place before maintenance work is done. The **Power Wedge** can also be used to help level and position new machinery.



FORCIBLE ENTRY

Removing barred or guarded windows can easily be done with the **Power Wedge**. Simply place the **Power Wedge** between the guard and a solid surface. Extending the **Power Wedge** should break the bolts, making the guard easy to remove. The quiet operation and remote use make this an effective tool for police and S.W.A.T. teams.

SPECIFICATIONS

	<u>POWER WEDGE</u>	<u>KIT</u>
Weight	6.4 kg	17 kg
Spreading Force:	89 kN	NA
Spreading Distance	105 mm	NA
Dimensions:	223 x 134 x 111 mm	477 x 407 x 178 mm
Hose Length:	NA	3 m
	<u>HAND PUMP</u>	
Fluid Capacity:	0.5 l	NA
Oil Volume per Stroke		
1st Stage up to 14 bar	3.8 cm ³	NA
2nd Stage up to 720 bar	1.0 cm ³	NA
Max. Operating Pressure:	720 bar	720 bar



WEBER-HYDRAULIK GMBH · Heilbronner Str. 30 · D-74363 Güglingen

Tel. 00 49 / 71 35-7 10 · Fax 00 49 / 71 35-7 13 01

Internet: <http://www.weber.de> · e-mail: info@weber.de

For More Information Contact Your Local Dealer