



HANDLINE NOZZLES

HEAVY-DUTY PROFESSIONAL AND INDUSTRIAL FIRE FIGHTING NOZZLES



HANDLINE NOZZLES

VIPER® BLUE DEVIL RYLSTATIC

- Improved FOG, more uniform, with smaller water drops.
- Ease of maintenance.
- No spinning teeth to break.
- Less friction loss through the nozzle.
- Reach increased in Straight Stream position.
- Better steam conversion.
- Optional low expansion foam tube available.



ERGONOMIC HANDLE

HARD ANODIZED EXTRUDED ALUMINIUM

SWIVEL INLET

RAISED LUG FOR EASIER FLOW IDENTIFICATION

MULTIPLE FLOW SETTINGS

RYLSTATIC SYSTEM. NO SPINNING TEETH

PROTECTIVE BUMPER WITH RAISED LUG FOR EASIER PATTERN IDENTIFICATION

BAFFLE ETCHED WITH PRESSURE PSI & BAR

FLUSH WITHOUT CHANGING PATTERN OR SHUTTING DOWN

ALUMINIUM PISTOL GRIP COVERED WITH THERMO RUBBER

HIGH VISIBILITY AND DURABILITY MARKS ETCHED ON ANODIZED ALUMINIUM

BLUE DEVIL nozzles have been designed and produced to accomplish NPFA 1964 and UNE EN- 15182-1 & UNE EN-15182-2 TYPE 3

RYLSTATIC IS AN UPGRADED ALTERNATIVE TO FIXED BUMPER TEETH AND SPINNING TEETH THAT IMPROVES FIREFIGHTING NOZZLES IN THE FOLLOWING POINTS:

- Less friction loss through the nozzle.
- Reach increased in Straight Stream position.
- Better FOG, more uniform, with smaller water drops.
- Better steam conversion.
- Ease of maintenance - No spinning teeth to break.

VIPER® BLUE DEVIL RYLSTATIC

VIPER[®] BLUE DEVIL RYLSTATIC



RYLSTATIC,
THE ULTIMATE CONCEPT
IN FIREFIGHTING NOZZLES!



- Improved FOG, more uniform, with smaller water drops.
- Ease of maintenance - No spinning teeth to break.
- Less friction loss through the nozzle.
- Reach increased in Straight Stream position.
- Better steam conversion.

HANDLINE NOZZLES

VIPER[®] BLUE DEVIL RYLSTATIC



HANDLINE NOZZLES

HEAVY-DUTY PROFESSIONAL AND INDUSTRIAL FIRE FIGHTING NOZZLES



VIPER® BLUE DEVIL RYLSTATIC

HANDLINE NOZZLES

1. LESS FRICTION LOSS & INCREASED REACH

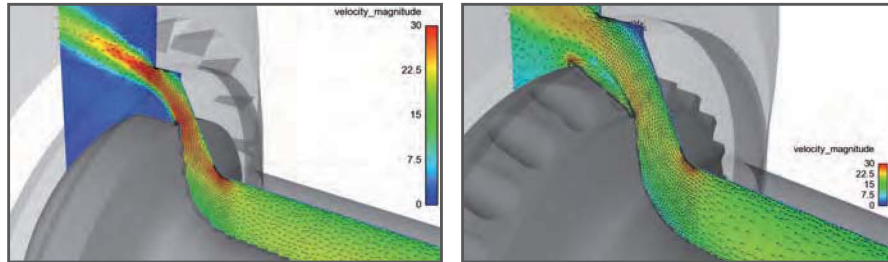


Image 1: Velocity of Water (left - Spinning teeth, right - RYLSTATIC)

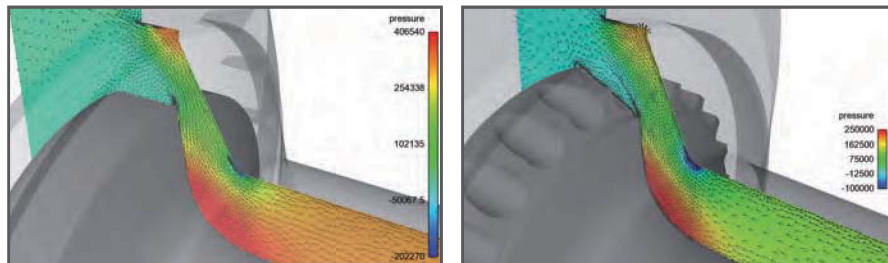


Image 2: Static Pressure distribution (left - Spinning teeth, right - RYLSTATIC)

With RYLSTATIC you have less friction loss since the direction of the flow will not change so abruptly. Nozzle reach increased in Straight Stream position around 4.5%.

2. IMPROVED FOG, MORE UNIFORM WITH SMALLER WATER DROPS. BETTER STEAM CONVERSION

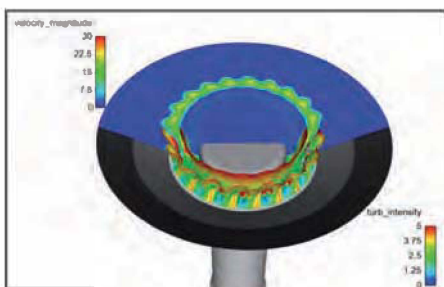


Image 3: Speed Magnitude Vs Turbulence Intensity (Spinnig Teeth turbine)

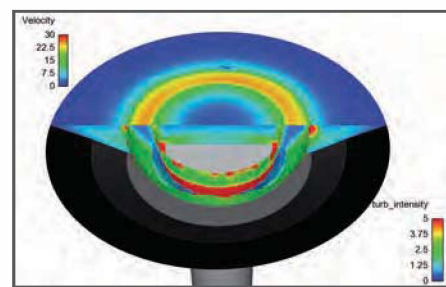


Image 4: Speed Magnitude Vs Turbulence Intensity (RYLSTATIC)

Our main Key success factor: the water drops are smaller but we have maintained the effective reach of the nozzle in FOG positions.

3. EASY MAINTENANCE


- No need to check the correct function of the spinning teeth
- Forget about broken or deformed teeth

VIPER® BLUE DEVIL RYLSTATIC

DATA MEASUREMENTS AT 7 BAR (100 PSI PRESSURE)
(5 & 6 BAR AVAILABLE)

VIPER® BLUE DEVIL RYLSTATIC


1"VIPER BLUE DEVIL perfect performance even at 40 bar (580 psi)



NOZZLE	POSITION	NOZZLE FLOW		EFFECTIVE REACH		MODEL	SWIVEL INLET Inches	WEIGHT		LENGTH	
		GPM	LPM	Feet	Meters			Lbs	Kg	Inches	cm
BD 550	1	5	25	59	18	BD 550	1"	3.8	1.72	20	8
	2	15	50	82	25						
	3	30	100	92	28						
	4	50	175	101	31						
BD 1330	1	13	50	82	25	BD 1330	1"	3.8	1.72	20	8
	2	23	90	88	27						
	3	30	115	92	28						
BD 1560	1	15	55	82	25	BD 1560	1"	3.8	1.72	20	8
	2	30	110	92	28						
	3	45	170	101	31						
	4	60	225	112	34						

BD 550


1 1/2"VIPER BLUE DEVIL



NOZZLE	POSITION	NOZZLE FLOW		EFFECTIVE REACH		MODEL	SWIVEL INLET Inches	WEIGHT		LENGTH	
		GPM	LPM	Feet	Meters			Lbs	Kg	Inches	cm
BD 3012	1	30	115	85	26	BD 3012	1-1/2"	4.2	1.91	9.2	23
	2	60	230	112	34						
	3	95	360	131	40						
	4	125	470	141	43						
BD 3015	1	30	115	85	26	BD 3015	1-1/2"	4.2	1.91	9.2	23
	2	60	230	112	34						
	3	95	360	131	40						
	4	125	470	141	43						
	5	150	560	148	45						
BD 6015	1	60	230	112	34	BD 6015	1-1/2"	4.2	1.91	9.2	23
	2	75	280	118	36						
	3	95	360	131	40						
	4	125	470	141	43						
	5	150	560	148	45						
BD 7515	1	75	280	118	36	BD 7515	1-1/2"	4.2	1.91	9.2	23
	2	95	360	138	42						
	3	125	470	144	44						
	4	150	560	148	45						

BD 3012

2 1/2"VIPER BLUE DEVIL



NOZZLE	POSITION	NOZZLE FLOW		EFFECTIVE REACH		MODEL	SWIVEL INLET Inches	WEIGHT		LENGTH	
		GPM	LPM	Feet	Meters			Lbs	Kg	Inches	cm
BD 9520	1	95	360	128	39	BD 9520	1-1/2"	6.6	3	10.8	27
	2	125	470	141	43	BD 9520	2-1/2"	6.9	3.13	11	28
	3	150	560	148	45						
	4	200	750	154	47						
BD 12250	1	125	470	131	40	BD 12250	2-1/2"	7.9	3.58	12.5	32
	2	150	560	144	44						
	3	200	750	151	46						
	4	250	950	157	48						

BD 9520

[**] All Blue Devil nozzles has been designed and produced to accomplish with the requirements of NFPA 1964 and UNE EN 15182-1 / UNE EN 15182-2 Type3

RYLSTATIC do not require maintenance job

AVAILABLE MODELS WITH RYLSTATIC:

BD 550 / BD 1330 / BD 1560 / BD 3012 / BD 7515 / BD 3015 / BD 6015 / BD 9520 / BD 12250