

SOLBERG® SCTF TRAINING FOAM

TRAINING FOAM CONCENTRATE



DESCRIPTION

SOLBERG® SCTF is a super concentrated Training Foam which is an economical product designed for cold and hot training exercises. The product is packaged as a one litre bottle of super concentrate. After adding the contents of the bottle to water, proportion the mixture through air-aspirated or non air-aspirated equipment. The resulting foam can be used for cold training exercises to allow crews to become familiar with their equipment and have minimal environmental impact. In addition, the foam can be used for hot training exercises on hydrocarbon, non-water miscible fuels.

APPLICATIONS

SOLBERG SCTF Training Foam should be used through conventional fire fighting foam making equipment with fresh water. Sea or brackish water can be used, but performance of the foam will decrease. This can be remedied by adding an additional 1 litre bottle of SCTF to the training foam mix. Self-educing foam nozzles or in-line inductors are common types of hardware for application. In addition, non-aspirating nozzles can be used.

MIXING INSTRUCTIONS

For mixing, it is recommended that an old firefighting foam 20 litre pail be used to prepare the solution. First fill the 20 litre pail with approximately 19 litres of water. Add the entire contents of the 1 litre bottle SCTF Training Foam to the 19 litres of water. Stir, tumble or shake the mixture to ensure optimal dispersion of the superconcentrate in the water.

ENVIRONMENTAL/TOXICOLOGICAL PROPERTIES

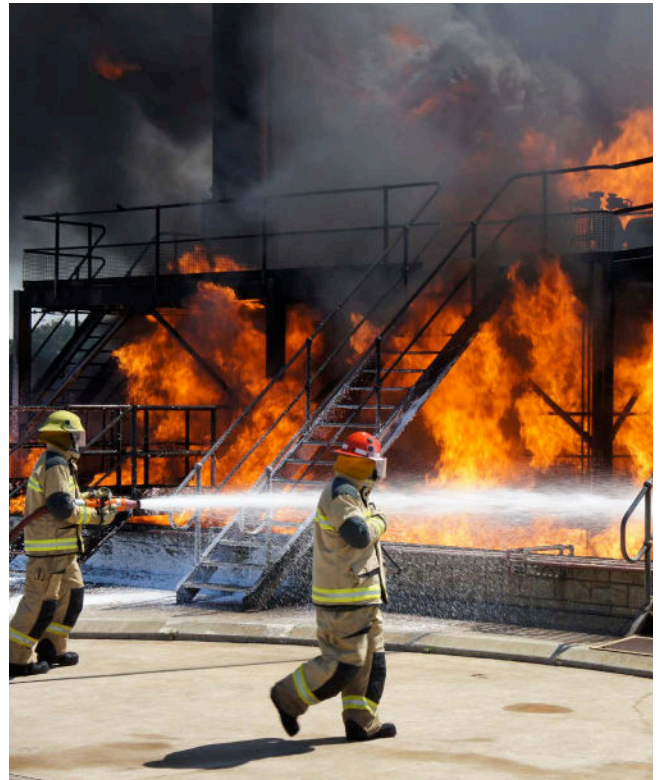
SOLBERG SCTF Training Foam has undergone a programme of testing to assess the impact of foam on the natural environment. This product is low in toxicity to tested aquatic organisms in its diluted format and applied through fire fighting equipment. Test data shows that this product is readily biodegradable. (Material Safety Data sheet and Product Environmental Data information are available upon request.) SCTF is organohalide free, and does not use any fluorochemical materials.

STORAGE

SOLBERG SCTF Training Foam may be stored for at least 5 years without change in its performance characteristics. Freezing and thawing of the product will have no effect on its performance. Freeze-thaw cycling may cause slight stratification which may be overcome with moderate agitation.

PACKAGING

SOLBERG SCTF Training Foam superconcentrate is available in a carton of 10 bottles, each bottle containing 1 litre of product.



TYPICAL PROPERTIES

Appearance:	Light yellow to straw coloured liquid
Nominal use concentration:	6%
Specific Gravity @ 20°C:	1.039
Viscosity (Kinematic) @ 20°C:	20 centistokes
Minimum use temperature	1.7°C
Surface Tension	29mN/m
Storage Temperature:	1.7° – 49°C
Freeze Point:	–8°C
pH @ 20°C:	7.2

PRODUCT FEATURES

Visual Substitute:	SOLBERG SCTF Foam looks like an typical foam concentrate, and is used with conventional fire fighting foam making equipment.
Ready Re-ignition:	Unlike a typical Foam concentrate, SOLBERG SCTF allows the fuel to be readily re-lit.
Cold Training:	With minimum environmental impact, the foam is suitable for equipment familiarisation through cold training exercises.
Safety:	As the foam is designed to be purpose-mixed for each training session, there is no risk of accidental substitution for a foam concentrate in a real fire situation.
Warehousing	The foam's 1 litre superconcentrate pack requires less warehouse space than other ready made foams supplied in 20 litre pails.

**Solutions That Save.**

FOR MORE INFORMATION

Contact any of our worldwide
Perimeter Solutions Fire Safety
offices or visit:

www.Perimeter-Solutions.com

UNITED STATES

10667 Jersey Blvd.
Rancho Cucamonga, CA 91730
Tel: +1 800 682 3626
Tel: +1 909 983 0772
salesfoamusa@perimeter-solutions.com

EMEA

Polígono de Baiña, Parcela 23
33682 Mieres (Asturias)
Spain
Tel: +34 985 24 29 45
salesfoamemea@perimeter-solutions.com

ASIA PACIFIC

3 Charles Street
St Marys NSW 2760 – Australia
Tel: +61 2 9673 5300
salesfoamapac@perimeter-solutions.com

perimeter-solutions.com

NOTICE PERIMETER SOLUTIONS MAKES NO REPRESENTATIONS OR WARRANTIES AS TO THE COMPLETENESS OR ACCURACY OF THE INFORMATION INCLUDED HEREIN. THE INFORMATION CONTAINED HEREIN IS NOT INTENDED TO PROVIDE REGULATORY, LEGAL OR EXPERT ADVICE RELATING TO THE PRODUCTS, ITS APPLICATION OR USES. NOTHING CONTAINED HEREIN IS TO BE CONSTRUED AS A RECOMMENDATION TO USE ANY PRODUCT, PROCESS, EQUIPMENT OR FORMULATION IN CONFLICT WITH ANY INDUSTRIAL PROPERTY OR INTELLECTUAL PROPERTY RIGHTS, AND PERIMETER SOLUTIONS MAKES NO REPRESENTATION OR WARRANTY, EXPRESS OR IMPLIED, THAT THE USE THEREOF WILL NOT INFRINGE ON ANY INDUSTRIAL PROPERTY OR INTELLECTUAL PROPERTY RIGHTS. NO REPRESENTATIONS OR WARRANTIES, EITHER EXPRESSED OR IMPLIED, OF MERCHANTABILITY, FITNESS FOR A PARTICULAR PURPOSE OR OF ANY OTHER NATURE ARE MADE HEREUNDER WITH RESPECT TO THE INFORMATION CONTAINED HEREIN.