



PRODUCT SPECIFICATIONS

Application	Structural Firefighting
Certification	AS/NZS 4967:2009 AS/ NZS 4602.2:2013

The philosophy behind BTech was to produce a comfortable and practical garment, without any compromise to safety.

The short style jacket is designed with ergonomic fit. The trouser measurements provide adequate overlap, so that there is no gap between coat and trousers when bending.

Popular BTech is now a favourite with many Fire authorities in Australia as well as other countries worldwide.



JACKET FEATURES

- 2 outer lower pockets with mitred flaps
- 1 internal pocket
- Cuffs with Neoprene anti-wicking barrier
- Moulded zip front with Velcro fastened flap
- American Specification 3M perforated triple trim with Trim Saver
- Hanger loop on under collar



TROUSER FEATURES

- Standard waist trousers with side elasticsation
- Fixed braces
- Back seat with yoke
- Curved knee pads and Aramid felt internal pads
- Internal hip patch pocket
- Plain trouser hems with Neoprene anti-wicking panels
- American Specification 3M perforated triple trim with Trim Saver

AVAILABLE FROM



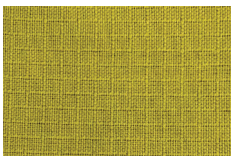
National Sales Office & Warehouse
Unit 1 / 23 Christable Way
LANDSDALE Western Australia 6055
1300 922 303
+ 61 8 6201 3170
interfire.com.au
info@interfire.com.au

South Australian Office &
Warehouse Unit 9 / 28 Heath St
LONSDALE South Australia, 5160
1300 922 303
+ 61 8 6201 3170
interfire.com.au
info@interfire.com.au

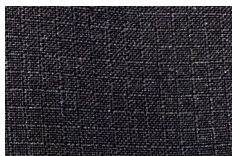


FABRIC OPTIONS

The BTech ensemble comes standard with a TITAN 1220 outershell in lime or navy.



LIME TITAN 1220



NAVY TITAN 1220

MOISTURE BARRIER OPTIONS

BTech 2 includes a moisture barrier in its construction.

The moisture barrier provides added protection from external water penetrating the garment and contacting the skin while effectively wicking away sweat keeping the wearer cool, protecting against steam related injuries and mitigating heat stress.

The standard BTech 2 includes a Gore-Tex® Fireblocker® moisture barrier. BTech 2 can be customised with a different moisture barrier on request.

Lead times apply for custom specified moisture barriers.

BTECH TROUSER WEARER MEASUREMENT CHART

WEARER'S HEIGHT	WEARER'S WAIST	GARMENT SIZE
172-179	82-89	SML REGULAR
172-179	90-97	MED REGULAR
172-179	98-105	LGE REGULAR
172-179	106-113	XLG REGULAR
172-179	114-121	2XL REGULAR
172-179	122-129	3XL REGULAR
172-179	130-137	4XL REGULAR

BTECH JACKET WEARER MEASUREMENT CHART

WEARER'S HEIGHT	WEARER'S CHEST	GARMENT SIZE
172-179	92-99	SML REGULAR
172-179	100-107	MED REGULAR
172-179	108-115	LGE REGULAR
172-179	116-123	XLG REGULAR
172-179	124-131	2XL REGULAR
172-179	132-139	3XL REGULAR
172-179	140-148	4XL REGULAR

AVAILABLE FROM



National Sales Office & Warehouse
Unit 1 / 23 Christable Way
LANDSDALE Western Australia 6055
1300 922 303
+ 61 8 6201 3170
interfire.com.au
info@interfire.com.au

South Australian Office &
Warehouse Unit 9 / 28 Heath St
LONSDALE South Australia, 5160
1300 922 303
+ 61 8 6201 3170
interfire.com.au
info@interfire.com.au